



NEWSLETTER

17.3.2025

What's On 17-21 March

Date	What's On	PE	Music Lessons	Clubs
Monday 17 March	2:45—3:15pm OPAL Parent Workshop. 3:15-4:00pm OPAL Stay and Play session	Robins and Herons Gym	Mrs Bloch flute	12:45 - 1:15pm Choir Club Yrs R-6 with Mrs Skinner *** 12:45—1:15pm Gym Club (Plymouth Argyle) *** 3:30—4:30pm Mix it Up Monday
Tuesday 18 March	9-10:30am Stay and Play Forest School Special Afternoon: Future Musicians Event at Chulmleigh College for selected pupils (please remember to bring packed lunch)	Year 1, Kingfishers and Herons Gym		12:45—1:15pm KS2 Tennis Club with Plymouth Argyle
Wednesday 19 March	9:00—12:30pm Herons Geography Fieldwork			12:45 - 1:15pm Recorder Club Yrs 2-6 with Mrs Gilpin-Perkins *** 3:30—4:30pm SATs Club with Mrs Wright
Thursday 20 March	Herons Forest School Day		Mrs Craddock keyboard Mrs Craddock violin lessons Mr White drums	12:45—1:15pm Chess Club KS2 with Mrs Healey *** 12:45—1:15pm Lego Club Yrs R-6 with Mr Skinner
Friday 21 March				12:45—1:15pm Homework Club Yrs 2-6 with Mrs Wright/ Mrs Cookson

What's On 24-28 March

Date	What's On	PE	Music Lessons	Clubs
Monday 24 March	Activkids sponsored event - Lele Nairne, judo professional, visiting LPS	Robins and Herons Gym	Mrs Bloch flute	12:45 - 1:15pm Choir Club Yrs R-6 with Mrs Skinner 12:45—1:15pm Gym Club (Plymouth Argyle) 3:30—4:30pm Mix it Up Monday
Tuesday 25 March		Year 1, Kingfishers and Herons Gym		12:45—1:15pm KS2 Tennis Club with Plymouth Argyle
Wednesday 26 March	Herons Judaism Workshop			12:45 - 1:15pm Recorder Club Yrs 2-6 with Mrs Gilpin-Perkins 3:30—4:30pm SATs Club with Mrs Wright
Thursday 27 March	Kingfishers Forest School Day Herons to Chulmleigh Library		Mrs Craddock keyboard Mrs Craddock string ensemble Mr White drums	12:45—1:15pm Chess Club KS2 with Mrs Healey 12:45—1:15pm Lego Club Yrs R-6 with Mr Skinner
Friday 28 March	Robins Mother's Day Assembly			12:45—1:15pm Homework Club Yrs 2-6 with Mrs Wright/ Mrs Cookson



Mix it Up Monday After School Club



Our Monday After School Club with Plymouth Argyle is ready to book online now through to 31st March. Please click [HERE](#) to book your child's place.

Dear Parent(s)/ Carer(s),

Last week was a much quieter week at Lapford, and I have to say it was very much needed! The last few weeks have seen so many visitors and extra curricular activities taking place that it was lovely to be able to really focus on the curriculum and catch up with some core learning.

This term there is a Geography focus across the school, from Year 1 up to Year 6. Our youngest learners are finding out more about our local area, using maps and fieldwork to find out more about the area where we live and learn. In Kingfishers, the children are busy finding out about the destructive power of nature; finding out how and why volcanoes, earthquakes, tornadoes and tsunamis occur. This week I popped in as they were learning all about tectonic plates.

In Herons, the children are learning about the amazing Americas and have been using digital mapping tools to find the location of capital cities of countries using longitude and latitude to create geographic coordinates. It is fantastic to see how skills and knowledge progress throughout the school in subjects like Geography and so wonderful when we see children using their prior learning to help them to understand new topics and concepts.

Last week we welcomed Kelly Millman to the team. Ms Millman is an experienced TA and Foundation Stage Practitioner and joins us to support in Robins and Kingfishers as well as joining the MTA team. I'm sure you will join me in offering her a warm welcome to Lapford.



At the end of last week, we sent out Year 3 pupils off for their very first residential visit. For the second year running, Year 3 travelled to Pixie's Holt on Dartmoor for a night away from home, and a day exploring the Dartmoor environment. The children were amazing, taking everything in their stride and getting stuck into all the activities, from a night walk in complete darkness, to scrambling and weaseling through rocks and caves!

They also did a fantastic job inside the accommodation- setting and clearing the table for meals and making their own packed lunches. The school felt very quiet without them but they arrived back late on Friday afternoon with rosy cheeks and totally shattered - all signs of a wonderful residential!

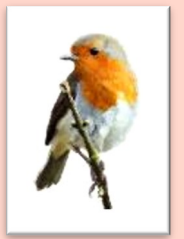
Tuesday also sees us hosting another Stay and Play special! This time the children will be in our Forest School, finding out how the children at Lapford enjoy learning in the environment. We would be delighted to welcome any 0-4 aged children and their parent/carers between 9:00 and 10:30am.

Have a lovely week.
Mrs Wright





Robins Spotlight

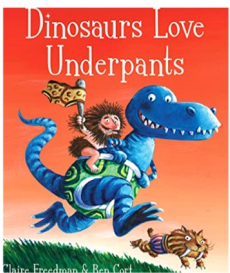


Robins have been busy this half term with their 'Dangerous Dinosaurs' topic.

We started the term off by welcoming our own six-foot T-Rex into the Nest as part of our Dinosaur Museum role-play and have been collecting ideas for names (Deano and Rory seem to be favourites so far) and we have enjoyed role-playing as tour guides, ticket collectors, palaeontologists, dinosaur hunters and scientists.



We have had lots of hands-on experiences to get fully immersed in all things dinosaur related in the Nest such as dinosaur slime, computing using Bee Bots in a dinosaur world, fossil excavations, comparing our heights with a dinosaur themed chart, and lots of dinosaur painting where we have experimented with colour mixing and printing in different ways.



We have really enjoyed the books in our topic this half term. EYFS have looked at 'Dinosaurs love Underpants' which we found was REALLY funny and 'Dig Dig Dinosaur' which taught us more about fossils. Year 1 have been writing their own instructions on how to wash an animal of our choice, based on the book, 'How to Wash a Woolly Mammoth.' The year 1 children have been writing different pieces over the last couple of months to add to a class anthology of work about Animals—so please watch this space!



We had such a fun World Book Day celebrating the wonderful world of books altogether! It has been so lovely to see the children in the Nest enjoying various reading books. Over the last few months, we have established a cosy, comfy reading den where the children have free choice of reading books and puppets to share their stories. Robins especially love reading the books we chose from Chulmleigh Library and often can be found reading these in the den with a blanket!



Devon Children & Young People's Neurodiversity Navigators

A free, confidential support service for children, families and young people navigating neurodiversity.

What we do

- Offer support and guidance to families of children and young people (up to the age of 18) awaiting a neurodiversity assessment across Devon
- Provide objective, evidence-based advice, positive support strategies, and practical and emotional support throughout the assessment process
- Connect with other teams and external services where needed to help co-ordinate your journey
- Enable peer support and connections with others going through the same process



Contact Us

Email: Livewell.devonndnavigators@nhs.net

Opening days: Monday - Friday

Opening hours: 9am-5pm



Have your say

We are interested in hearing about the lived experiences of young people and their families.

Your views and experiences allow us to develop our team, and tailor the services we provide to improve the support for our families and young people.



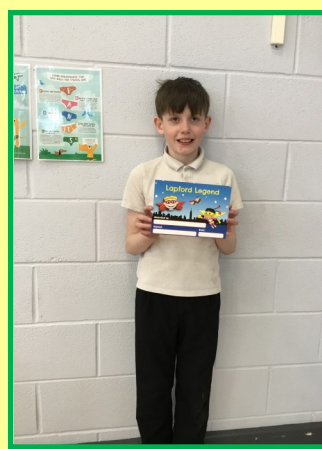
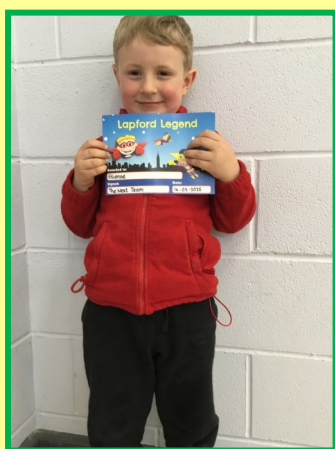
Stars of the Week - 14th March



Congratulations to Freya, Oliver and Izzy!



Lapford Legends - 14th March



Congratulations to Etienne and Alfie!



- 1 JOIN OUR LOTTERY**
- 2 BOOST SCHOOL FUNDS**
- 3 WIN CASH PRIZES**

It's As Easy As

- Join our weekly lottery from just £1 a week
- It's an easy way to support our school and help raise funds
- 40% of ticket sales go straight to our school funds
- There's a guaranteed winner every week as well as the chance to win £25,000

[**Buy a Ticket**](#)

Supporters must be 16 years of age or older.

BREAK THE RULES DAY

PAY ONE POUND TO BREAK ALL THESE RULES...

- No home clothes
 - No hoods or hats inside
 - No nail polish
 - No trainers
 - No Hair down
- No other rules can be broken.*
- Only on Friday 4th April
- If you have any questions ask Rose & Ross*

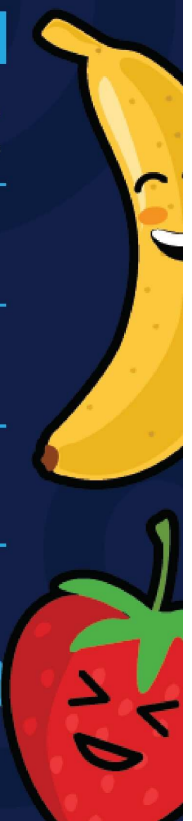
Chulmleigh Academy Trust



SPRING MENU *Week one*

	MONDAY	TUESDAY	WEDNESDAY	THURSDAY	FRIDAY
Pick a MAIN	Sweet & Sour Chicken with Noodles and Sweetcorn	Beef Bolognese Pasta with Garlic bread and Garden Peas	Roast Turkey with Roast Potatoes, Gravy, Carrots and Cabbage	Hunters Chicken Wrap with new potatoes and Salad	Jumbo Fish Finger sandwich with Lettuce and Tartar Sauce, Roasted new Potatoes and Garden Peas
Pick a MEAT-FREE MAIN	Macaroni Cheese and Sweetcorn	Vegetable Soft Shell Taco with Garden Peas	Broccoli and Sweet Potato Bake, with Roast Potatoes, Gravy, Carrots and Cabbage	Cheese and Onion Quiche with New Potatoes and Salad	Veggie Finger Sandwich with New Potatoes and Peas
Pick a JACKET POTATO	Cheese, Beans, Tuna	Cheese, Beans, Tuna	Cheese, Beans, Tuna	Cheese, Beans, Tuna	Cheese, Beans, Tuna
Pick a SANDWICH	Cheese or Ham	Cheese or Ham	Cheese or Ham	Cheese or Ham	Cheese or Ham
Pick a DESSERT	Fruit Platter Yogurt Fresh Fruit	Carrot and Courgette Chocolate Brownie Yogurt Yogurt Fresh Fruit	Jelly with Fruit Yogurt Fresh Fruit	Lemon Drizzle Cake Yogurt Fresh Fruit	Oaty Cookie Yogurt Fresh Fruit

We are pleased to offer a variety of allergen free options on our food menu. Although all food is prepared in a kitchen that handles most allergens and therefore we cannot guarantee that cross contamination will never occur, we do take every possible precaution to prevent this from happening.



FRESH FRUIT
& YOGHURT
SERVED DAILY

SPRING MENU

Week two

	MONDAY	TUESDAY	WEDNESDAY	THURSDAY	FRIDAY
Pick a MAIN	Chipolata Sausages with Mash, Gravy, Carrots and Peas	Braised Steak Pie with Roasted new Potatoes, Carrots and Peas	Roast Chicken with Roast Potatoes, Gravy, Carrots and Cabbage	Pulled BBQ Pork in a bun with wedges and Sweetcorn	Breaded Fish with Crushed Potatoes and Beans
Pick a MEAT-FREE MAIN	Vegetarian Sausage with Mash, Carrots, Peas and Gravy	Hominy Pie with Roasted new Potatoes, Carrots and Peas	Vegetable Hot Pot, with Roast Potatoes, Carrots and Cabbage	Veggie Burger with wedges and Sweetcorn	Vegetable Fajita with Crushed New Potatoes And Beans
Pick a JACKET POTATO	Cheese, Beans, Tuna	Cheese, Beans, Tuna	Cheese, Beans, Tuna	Cheese, Beans, Tuna	Cheese, Beans, Tuna
Pick a SANDWICH	Cheese or Ham	Cheese or Ham	Cheese or Ham	Cheese or Ham	Cheese or Ham
Pick a DESSERT	Iced Sponge Yogurt Fresh Fruit	Chocolate Orange cake Yogurt Fresh Fruit	Strawberry Mousse Yogurt Fresh Fruit	Apple Cake Yogurt Fresh Fruit	Chocolate Krispies Cake Yogurt Fresh Fruit

We are pleased to offer a variety of allergen free options on our food menu. Although all food is prepared in a kitchen that handles most allergens and therefore we cannot guarantee that cross contamination will never occur, we do take every possible precaution to prevent this from happening.

FRESH FRUIT
& YOGHURT
SERVED DAILY

SPRING MENU

Week three

	MONDAY	TUESDAY	WEDNESDAY	THURSDAY	FRIDAY
Pick a MAIN	Meatballs and Tomato Sauce with Pasta and Sweetcorn	Mild Beef Chilli with Nachos and Rice, Sweetcorn	Roast Pork with Roast Potatoes, Gravy, Carrots and Cabbage	Breaded Chicken Burger with Wedges and Peas	Fish Cakes with Diced Potatoes and Beans
Pick a MEAT-FREE MAIN	Tomato and Mozzarella pasta and Sweetcorn	Margherita Pizza with Nachos and Sweetcorn	Broccoli and Cauliflower Gratin, with Roast Potatoes, Carrots and Cabbage	Black Bean and Mozzarella Quesadilla with Rice and Peas	Sweet Potato and Chickpea Cake with Diced Potatoes and Beans
Pick a JACKET POTATO	Cheese, Beans, Tuna	Cheese, Beans, Tuna	Cheese, Beans, Tuna	Cheese, Beans, Tuna	Cheese, Beans, Tuna
Pick a SANDWICH	Cheese or Ham	Cheese or Ham	Cheese or Ham	Cheese or Ham	Cheese or Ham
Pick a DESSERT	Fruit Platter Yogurt Fresh Fruit	Carrot Cake Yogurt Fresh Fruit	Jam and Coconut Sponge Yogurt Fresh Fruit	Flapjack Yogurt Fresh Fruit	Jelly with Fruit Yogurt Fresh Fruit

We are pleased to offer a variety of allergen free options on our food menu. Although all food is prepared in a kitchen that handles most allergens and therefore we cannot guarantee that cross contamination will never occur, we do take every possible precaution to prevent this from happening.

CHULMLEIGH ACADEMY TRUST

School Terms and Holiday Dates - 2024/2025 Academic Year

	September					October					November					December					January					February					
College Week	1	2	1	2	1	1	2	1	2	1	1	2	1	2	1	1	2	1	2	1	1	2	1	2	1	1	2	1	2	1	
Monday	2	9	16	23	30	7	14	21	28	4	11	18	25	2	9	16	23	30	6	13	20	27	3	10	17	24	2	9	16	23	30
Tuesday	3	10	17	24	8	15	22	29	5	12	19	26	3	10	17	24	31	7	14	21	28	4	11	18	25	3	10	17	24	31	
Wednesday	4	11	18	25	9	16	23	30	6	13	20	27	4	11	18	25	8	15	22	29	5	12	19	26	4	11	18	25	31		
Thursday	5	12	19	26	10	17	24	31	7	14	21	28	5	12	19	26	9	16	23	30	6	13	20	27	5	12	19	26	31		
Friday	6	13	20	27	11	18	25	8	15	22	29	6	13	20	27	10	17	24	31	7	14	21	28	6	13	20	27	31			

	March					April					May					June					July					August								
College Week	1	2	1	2	1	1	2	1	2	1	1	2	1	2	1	1	2	1	2	1	1	2	1	2	1	1	2	1	2	1				
Monday	3	10	17	24	31	7	14	21	28	1	8	15	22	29	2	9	16	23	30	3	10	17	24	31	1	8	15	22	29	4	11	18	25	31
Tuesday	4	11	18	25	8	15	22	29	2	9	16	23	30	4	11	18	25	2	9	16	23	30	2	9	16	23	30	5	12	19	26	31		
Wednesday	5	12	19	26	9	16	23	30	3	10	17	24	31	5	12	19	26	3	10	17	24	31	3	10	17	24	31	6	13	20	27	31		
Thursday	6	13	20	27	10	17	24	31	4	11	18	25	6	13	20	27	4	11	18	25	4	11	18	25	31	7	14	21	28	31				
Friday	7	14	21	28	11	18	25	2	9	16	23	30	7	14	21	28	6	13	20	27	5	12	19	26	31	8	15	22	29	31				

Bank Holidays ■

25 December 2024
 26 December 2024
 01 January 2025
 18 April 2025 (Good Friday)
 21 April 2025 (Easter Monday)
 05 May 2025 (May Day)
 26 May 2025 (Spring Bank Holiday)
 26 August 2025 (Summer Bank Holiday)

Non-Pupil Days ■

Five days selected from within the term dates to be determined by the Board of Directors

School Holidays ■

Occasional Holidays ■

Two days selected from within the term dates to be determined by the Board of Directors

CHULMLEIGH ACADEMY TRUST

School Terms and Holiday Dates - 2025/2026 Academic Year

	September					October					November					December					January					February						
College Week	1	2	1	2	1	1	2	1	2	1	1	2	1	2	1	1	2	1	2	1	1	2	1	2	1	1	2	1	2	1		
Monday	1	8	15	22	29	6	13	20	27	3	10	17	24	1	8	15	22	29	5	12	19	26	2	9	16	23	30	2	9	16	23	30
Tuesday	2	9	16	23	30	7	14	21	28	4	11	18	25	2	9	16	23	30	6	13	20	27	3	10	17	24	31	3	10	17	24	31
Wednesday	3	10	17	24	8	15	22	29	5	12	19	26	3	10	17	24	31	4	11	18	25	4	11	18	25	4	11	18	25	31		
Thursday	4	11	18	25	9	16	23	30	6	13	20	27	4	11	18	25	5	12	19	26	5	12	19	26	5	12	19	26	31			
Friday	5	12	19	26	10	17	24	31	7	14	21	28	5	12	19	26	6	13	20	27	6	13	20	27	6	13	20	27	31			

	March					April					May					June					July					August							
College Week	1	2	1	2	1	1	2	1	2	1	1	2	1	2	1	1	2	1	2	1	1	2	1	2	1	1	2	1	2	1			
Monday	2	9	16	23	30	6	13	20	27	4	11	18	25	1	8	15	22	29	3	10	17	24	31	1	8	15	22	29	4	11	18	25	31
Tuesday	3	10	17	24	31	7	14	21	28	5	12	19	26	2	9	16	23	30	2	9	16	23	30	2	9	16	23	30	5	12	19	26	31
Wednesday	4	11	18	25	8	15	22	29	6	13	20	27	3	10	17	24	31	3	10	17	24	31	3	10	17	24	31	6	13	20	27	31	
Thursday	5	12	19	26	9	16	23	30	7	14	21	28	4	11	18	25	4	11	18	25	4	11	18	25	31	7	14	21	28	31			
Friday	6	13	20	27	10	17	24	31	8	15	22	29	5	12	19	26	5	12	19	26	5	12	19	26	31	8	15	22	29	31			

Bank Holidays ■

25 December 2025
 26 December 2025
 01 January 2026
 03 April 2026 (Good Friday)
 06 April 2026 (Easter Monday)
 04 May 2026 (May Day)
 25 May 2026 (Spring Bank Holiday)
 24 August 2026 (Summer Bank Holiday)

Non-Pupil Days ■

Five days selected from within the term dates to be determined by the Board of Directors

School Holidays ■

Occasional Holidays ■

Two days selected from within the term dates to be determined by the Board of Directors