



Dear Parent(s)/ Carer(s)

It's October already and the first month of the school year has absolutely flown by.

This week the children have been busy preparing for our Harvest Festival celebration. In our worship this term we have been thinking about the value of generosity and the children have been thinking about how they can be generous with their time and talents. This week we talked to the children about harvest and we have been incredibly impressed with the generous donations that have come flooding in. As in previous years, any donations received will be delivered to The Ark to help stock up their foodbank. We will continue to collect donations this week and The Ark would be most grateful for any donations, but are particularly keen to receive donations of:

- Tinned meat or fish
- Pasta sauces
- Tinned vegetables
- Cereal
- Hygiene products
- Dog/cat food

We hope that you will be able to join us at The Congregational Church at 2.30pm on Wednesday to celebrate our Harvest Festival and to hear more from the children.

Forest School


In our first few weeks at school, all classes have had the opportunity to visit our Forest School and enjoy various apple-themed activities.

This week both Kingfishers and Robins were in the forest and on Thursday I was fortunate enough to be able to try some apple juice that had been pressed by the children in Kingfishers. It was delicious and so much tastier than any I had tasted before!

Robins have also been getting to know the forest and have been busy bug hunting and leaf rubbing this week. We are so lucky to have such wonderful grounds and such amazing staff who inspire a love of the outdoors in us all!

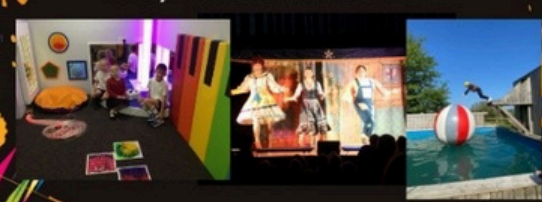


JOIN US FOR TEA, CAKE AND CHAT AND MEET YOUR



FLS
Friends of Lapford
School

The Ark, Monday, October 6th at 7.30pm
Last year we were able to fund...



What will we be able to achieve this year?

I hope that many of you will be able to join us this evening for our FLS welcome meeting at The Ark at 7.30pm. There will be plenty of cake and hot drinks and hopefully the ideas will be flowing!

Do join us if you are able.

Have a wonderful week.

Mrs Wright



Harvest Challenge!

Please join us in making a difference to our local community!

Lapford Primary School invite you to support the children in gathering donations for our Harvest festival next Wednesday 8th October 2025.

We are looking for any donation, no matter how small or large, to contribute towards a whole school donation for those who need support in our local area. For every box filled, the children will receive Dojo points they can put towards prizes across each half term. The more donations we receive, the more the children will win Dojos!

If you are happy to donate something, please send your child in with their donations to be collected by next Wednesday or leave these in the front desk area.

Any questions please get in touch and we hope you will join us in giving something little to make a big difference.



If we fill 1 box,
everyone gets

+1 Dojo point!

If we fill 2 boxes,
everyone gets

+3 Dojo points!



If we fill 3 boxes,
everyone gets

+5 WOW Dojo points!



What Can I Donate for Harvest?

TINNED GOODS



PACKETS & DRY FOODS



BREAKFAST ITEMS



TOILETRIES



OTHER LONG-LIFE GOODS

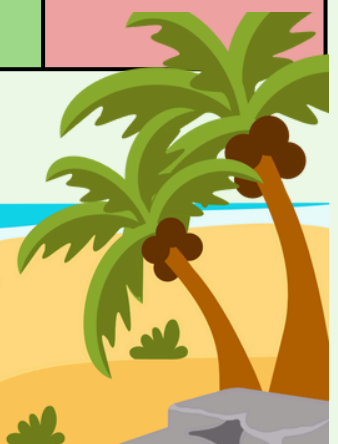


What's on 6-10 October

Day	What's On	PE	Music Lessons	Clubs
Monday 6 October	<ul style="list-style-type: none"> Kingfishers to Library 7:30pm FLS meeting at The Ark 	Hérons swimming	Ms Bloch flute lessons	SESSION CANCELLED 3:30 - 4:30pm Yrs2-6 Handball Club
Tuesday 7 October	<ul style="list-style-type: none"> Hérons trip to Farmwise 9 - 10:30am Stay & Play 			
Wednesday 8 October	2:30pm Harvest Festival at Lapford Congregational Church. All are welcome!			
Thursday 9 October			<ul style="list-style-type: none"> Mrs Craddock keyboard & violin lessons Mr White drum lessons 	
Friday 10 October	Hello Yellow Non Uniform Day for World Mental Health Day £1 donations			

Planning a holiday?

Term dates for 2025-26 and 2026-27 can be found [here](#)



What's on 13-17 October

Day	What's On	PE	Music Lessons	Clubs
Monday 13 October	Flu Nasal Spray Vaccinations for Yrs R-6 WITH PRIOR PARENTAL CONSENT	Hérons swimming	Ms Bloch flute lessons	3:30 - 4:30pm Yrs2-6 Handball Club
Tuesday 14 October	9 - 10:30am Stay & Play			
Wednesday 15 October				
Thursday 16 October	Kingfishers Forest School Afternoon		<ul style="list-style-type: none"> • Mrs Craddock keyboard & violin lessons • Mr White drum lessons 	
Friday 17 October				



Let's talk about Mental Health...

We all have mental health. Your mental health affects how you feel, think and act. It refers to your emotional, psychological and social wellbeing. Your mental health can change on a daily basis and over time, and can be affected by a range of factors.



It's important to look after your mental health, as you would look after your physical health. Your state of wellbeing affects how you cope with stress, relate to others and make choices. It also plays a part in your relationships with your family, community, colleagues and friends.

When children and young people have good levels of wellbeing it helps them to:

- Learn and explore the world
- Feel, express and manage positive and negative emotions
- Form and maintain good relationships with others
- Cope with, and manage, change, setbacks and uncertainty
- Develop and thrive.

When children and young people look after their mental health and develop their coping skills it can help them to boost their resilience, self-esteem and confidence. It can also help them learn to manage their emotions, feel calm, and engage positively with their education - which can, in turn, improve their academic attainment.

Here at Lapford, we keep children's mental health at the forefront of our minds and employ many strategies to ensure that children feel safe, secure and happy in school. As a school we follow the Thrive approach which helps us to identify and support children who may be struggling with their mental health. We also use the 5 point scale across the whole school to help children identify and articulate their emotions.

World Mental Health Day is on 10th October and this week the children will be thinking about how to keep their mental health well by following the '10 a day'



YOUNG Mi MINDS

Young Minds is a charity that help parents and children who may be struggling with their mental health. Their aim is to stop young people's mental health reaching crisis point. They provide support and advice for children and parents on a huge range of issues which can affect children's mental health. They also provide support and resources for schools, so that we can help children in school and signpost to additional services.

Young Minds Mental Health Charity for Children and Young People

YOUNGMINDS

**Hello
Yellow
FRIDAY 10 OCT**

On World Mental Health Day, 10th October, we will be supporting Young Minds by taking part in 'Hello Yellow'. This is a national campaign to raise money for Young Minds.

We are asking children to wear non-uniform, preferably something yellow if they have it, and donate via MyEd to this worthwhile charity.

Throughout the day, children will be learning in their classes and house teams about what they can do to support their own mental health and wellbeing and will come together at the end of the day to share what they have learnt.

Cake Sale - £1.00 cash needed

School Council will also be running a cake sale at break time and after school, with all money raised going to Hello Yellow. Any cake or biscuit donations would be very welcome from Thursday and children will need £1 cash to buy a cake or biscuit on the day. We can't wait!



Stars of the Week 3 October 2025



Congratulations to Havyn, Sapphire & Arthur!

Lapford Legends 3 October 2025



Congratulations to Charlotte, Dominic & Aubree!

RAISING FUNDS FOR FRIENDS OF LAPFORD SCHOOL,
LAPFORD VICTORY HALL AND
LAPFORD CONGREGATIONAL CHURCH

Christmas BINGO NIGHT

GREAT PRIZES AND FUN FOR ALL

SATURDAY 6TH DECEMBER

DOORS OPEN AT 6.30 / EYES DOWN 7.30 /
BAR AND TUCK SHOP. MEGA RAFFLE /
CASH AND CARD ACCEPTED

ANY QUERIES OR TO
DONATE A PRIZE PLEASE
CONTACT
CAT SEYMOUR ON
01363884432

JOB ADVERTISEMENT
PERMANENT
After School Cleaner

CHULMLEIGH COMMUNITY COLLEGE
AND
CHULMLEIGH PRIMARY SCHOOL

15 hours per week (3 hours per evening) x 41 weeks per annum
Available from November 2025

Grade A: £12.65 per hour

Chulmleigh Academy Trust is seeking a motivated and enthusiastic person to join our highly valued, hardworking, and committed premises team.

We have a vacancy to clean the schools outside of the school day. The working pattern is Monday to Friday with timing to be agreed at interview but 3 hours each evening to be between 5 pm and 10 pm. The contract will be for 41 weeks per annum (term time plus three weeks). We are pleased to offer this permanent position, which will be available from November 2025.

Parking is available on site. Employment benefits include eligibility to join the Local Government Pension Scheme. In addition, employees of the Trust are entitled to 50% off childcare fees at our out of school clubs for children of compulsory school age.

Duties will include cleaning, both internally and externally and other tasks that may be designated by the Supervisor.

Further details, including the job description can be found on our [website](#). Please download and complete the application form and email it to personnel@chulmleighdevon.sch.uk by 10am on Thursday, 9th October. All applications will be acknowledged. Alternatively, please call 01769 580216 to register your interest in the role and we will be pleased to contact you to discuss it further and support you with completing an application.

We are committed to promoting equality of opportunity and access for all, irrespective of age, background, race, gender, religion, ability, disability, or sexuality. We welcome applications for employment from the whole community.

As employers, we are committed to safeguarding and promoting the welfare of children and in that regard have appropriate policies and procedures. All staff undertake a criminal record check via the Disclosure and Barring Service (DBS) and interviews will include questions about safeguarding children. In line with Government guidance, we may carry out online searches against shortlisted applicants' names as part of our due diligence checks

Closing date: 10 am Thursday, 9 October 2025
Interview date: Thursday, 16 October 2025

YOUR SCHOOL LOTTERY

- JOIN OUR LOTTERY
- BOOST SCHOOL FUNDS
- WIN CASH PRIZES

It's As Easy As

- Join our weekly lottery from just £1 a week
- It's an easy way to support our school and help raise funds
- 40% of ticket sales go straight to our school funds
- There's a guaranteed winner every week as well as the chance to win £25,000

Buy a Ticket

Sponsorship must be 16 years of age or older

School Lunches

MyEd + Pay £2.61

Please order by midnight the day before

*

If you miss this deadline please provide your child with a packed lunch

www.lapford-primary.devon.sch.uk

Lapford Primary School Wrap-around Care



Time Slots Available Between: 8 am - 9 am
3.30 pm - 6 pm

Charges: Registration Fee £10 (per family)
£6.00 per hour for 2 year olds
£5.50 per hour for 3-4 year olds
£4.50 per hour for Reception to Year 6
After 6pm Late Collection Charge - £15

Tax-free childcare
Please follow this link:
[Tax-Free Childcare - GOV.UK](https://www.gov.uk/tax-free-childcare)

For further information
please visit our website:
www.lapford-primary.devon.sch.uk



Tel: 01363 83292

Email: admin@lapford-primary.devon.sch.uk



- 1 JOIN OUR LOTTERY
- 2 BOOST SCHOOL FUNDS
- 3 WIN CASH PRIZES

It's As Easy As

- Join our weekly lottery from just £1 a week
- It's an easy way to support our school and help raise funds
- 40% of ticket sales go straight to our school funds
- There's a guaranteed winner every week as well as the chance to win £25,000

[Buy a Ticket](#)



JOB ADVERTISEMENT

Chulmleigh Primary School
Permanent
Foundation Stage Practitioner
18 hours per week x 38 weeks per annum
(with flexibility for additional hours/additional day)
Grade C: £13.26 - £13.69 per hour - depending on experience
Required from November 2025

To support increased nursery provision from September, we are seeking to appoint an enthusiastic, committed, patient and motivated Foundation Stage Practitioner to join our team at Chulmleigh Primary School.

The successful candidate will work with the teacher and senior staff to ensure a creative learning environment within the Early Years Foundation Stage framework. The role will involve high quality practice through a range of interesting and stimulating activities and supervision of individuals and groups of children in the nursery or foundation stage unit.

Candidates should demonstrate the following skills and attributes:

- Hold a recognised Level 3 Early Years qualification
- Hold suitable Level 2 Literacy and Numeracy qualifications
- Excellent communication skills
- Patience and positivity
- The ability to support colleagues, use positive behaviour management strategies and ensure the school continues its excellent provision for all pupils

In the first instance, the working pattern will be 3 days per week, 6 hours per day from 9 am - 3.30 pm, allowing for a 30-minute unpaid lunch break. The working pattern will be Mondays, Tuesdays and Fridays. However, due to the expansion of the nursery provision and popularity of the provision, the ideal candidate will have flexibility to work additional hours on a casual basis when required, with the possibility of increasing the working pattern to a fourth day. The role is term time only (38 weeks per year).

Employment benefits include eligibility to join the Local Government Pension Scheme. In addition, employees of the Trust are entitled to 50% off childcare fees at our out of school clubs for children of compulsory school age.

We are committed to promoting equality of opportunity and access for all, irrespective of age, background, race, gender, religion, ability, disability, or sexuality. We welcome applications for employment from the whole community.

The candidate pack (including job description) and application form are available on our [website](http://www.chulmleigh.devon.sch.uk). Please download and complete the application form and email it to personnel@chulmleigh.devon.sch.uk by 10 am on Tuesday, 14 October 2025. All applications will be acknowledged.

As employers, we are committed to safeguarding and promoting the welfare of children and young people and expect all staff and volunteers to share this commitment and in that regard, we have appropriate policies and procedures. All staff undertake a criminal record check via the Disclosure and Barring Service (DBS) and interviews will include questions about safeguarding children.

In line with Government guidance, we may carry out online searches against shortlisted applicants' names as part of our due diligence checks.

Closing date: 10 am Tuesday, 14 October 2025

Interview Date: Tuesday, 21 October 2025



JOB ADVERTISEMENT Lapford Community Primary School

Permanent
Foundation Stage Practitioner & Out of School Club Assistant
Two roles available - to enable wrap-around cover at the beginning and end of each day
Grade C: £13.26 - £13.69 per hour - depending on experience
Required from January 2026

To support our expanded nursery provision, we are seeking to appoint two enthusiastic, committed, patient and motivated Foundation Stage Practitioners, including the role of Out of School Club Assistant, to join our team at Lapford Community Primary School.

Foundation Stage Practitioner The successful candidates will work with the teacher and senior staff to ensure a creative learning environment within the Early Years Foundation Stage framework. The role will involve high quality practice through a range of interesting and stimulating activities and supervision of individuals and groups of children in the nursery or foundation stage unit.

Candidates should demonstrate the following skills and attributes:

- Hold a recognised Level 3 Early Years qualification
- Hold suitable Level 2 Literacy and Numeracy qualifications
- Excellent communication skills
- Patience and positivity
- The ability to support colleagues, use positive behaviour management strategies and ensure the school continues its excellent provision for all pupils

Out of School Club Assistant We are pleased to be able to offer the successful FSP candidates an additional role as Out of School Club Assistant. The successful candidates will work with senior staff to support the day to day running of the Out of School Club. The role will provide an opportunity to engage children in a range of activities in a relaxed, safe environment.

Role 1 working pattern:

Foundation Stage Practitioner - 17.5 hpw x 38 weeks (term time only) working from Mon to Fri from 9 am to 12.30 pm
Out of School Club Assistant - 7.5 hpw x 38 weeks (term time only) working from Mon to Fri from 7.30 to 9 am

Role 2 working pattern:

Foundation Stage Practitioner - 17.5 hpw x 38 weeks (term time only) working from Mon to Fri from 12 pm to 3.30 pm
Out of School Club Assistant - 10 hpw x 38 weeks (term time only) working from Mon to Fri from 3.30 pm to 5.30 pm

Employment benefits include eligibility to join the Local Government Pension Scheme. In addition, employees of the Trust are entitled to 50% off childcare fees at our out of school clubs for children of compulsory school age. We are committed to promoting equality of opportunity and access for all, irrespective of age, background, race, gender, religion, ability, disability, or sexuality. We welcome applications for employment from the whole community.

The candidate pack (including job descriptions) and application form are available on our [website](http://www.chulmleigh.devon.sch.uk). Please download and complete the application form and email it to personnel@chulmleigh.devon.sch.uk by 10 am on Wednesday, 15 October 2025. **Please indicate clearly which role/s you are applying for (or either role).** All applications will be acknowledged.

As employers, we are committed to safeguarding and promoting the welfare of children and young people and expect all staff and volunteers to share this commitment and in that regard, we have appropriate policies and procedures. All staff undertake a criminal record check via the Disclosure and Barring Service (DBS) and interviews will include questions about safeguarding children.

In line with Government guidance, we may carry out online searches against shortlisted applicants' names as part of our due diligence checks.

Closing date: 10 am Wednesday, 15 October 2025

Interview Date: Wednesday, 22 October 2025



Lapford Breakfast Club Menu

MONDAY	TUESDAY	WEDNESDAY	THURSDAY	FRIDAY
Beans on Toast	Bagels	Sausage Baps	Toasted Teacakes	Scrambled Eggs on Toast

- Toast
- Crumpets
- Selection of Jams & Spreads
- Fresh Fruit
- Yoghurt
- Cereals
- Milk
- Apple Juice
- Orange Juice
- Water

AVAILABLE EVERY DAY!

FREE Breakfast Club Reception to Year 6

ALL pupils from Reception to Year 6 can book into our FREE 8:30am Breakfast Club. Please go to MyEd to select your days!

PLEASE CLICK [HERE](#) FOR OUR LUNCH ALLERGEN INFORMATION

Chulmleigh Academy Trust

FRESH FRUIT & YOGHURT SERVED DAILY

AUTUMN MENU Week 1

	MONDAY	TUESDAY	WEDNESDAY	THURSDAY	FRIDAY
Pick a MAIN	Breakfast Brunch with Bacon, Sausage, Hash Brown and Beans	Pasta Bolognese with Garlic Bread and Sweetcorn	Roast Gammon with Roast Potatoes, Gravy, Carrots and Cabbage	Chicken, Ham & Sweetcorn Pie with New Potatoes, Carrots & Peas	Fish Finger Sandwich with Roasted New Potatoes and Garden Peas
Pick a MEAT-FREE MAIN	Quorn Sausage with Hash Brown, Beans & Tomatoes	Vegetable Soft Shell Taco with New potatoes & Garden Peas	Chickpea and Sweet Potato Bake, with Roast Potatoes, Carrots and Cabbage	Cheese and Onion Quiche with New Potatoes and Peas	Veggie Finger Sandwich with Roasted New Potatoes and Peas
Pick a JACKET POTATO	Cheese or Tuna Mayo	Cheese or Beans	Beans or Tuna	Cheese or Tuna Mayo	Cheese or Beans
Pick a SANDWICH	Cheese or Ham	Ham or Tuna Mayo	Cheese or Tuna Mayo	Ham or Cheese	Ham or Tuna Mayo
Pick a DESSERT	Fruit Platter Yogurt Fresh Fruit	Carrot and Courgette Chocolate Brownie Yogurt Fresh Fruit	Jelly with Mandarins Yogurt Fresh Fruit	Banana Cake Yogurt Fresh Fruit	Oaty Cookie Yogurt Fresh Fruit

We are pleased to offer a variety of allergen free options on our food menu. Although all food is prepared in a kitchen that handles most allergens and therefore we cannot guarantee that cross contamination will never occur, we do take every possible precaution to prevent this from happening.

School Lunches

Chulmleigh Academy Trust

FRESH FRUIT & YOGHURT SERVED DAILY

AUTUMN MENU *Week 2*

	MONDAY	TUESDAY	WEDNESDAY	THURSDAY	FRIDAY
Pick a MAIN	Beef Chilli with Rice, Nachos & Sweetcorn	Steak & vegetable Pie with Mash, Carrots and Peas	Roast Pork with Roast Potatoes, Gravy, Carrots and Cabbage	Chicken Burger with Wedges and Peas	Breaded Fish with Roasted New Potatoes and Beans
Pick a MEAT-FREE MAIN	Vegetarian 5 Bean Chilli with Rice, Nachos & Sweetcorn	Falafel Wraps with Mash, carrots & Peas	Homity Pie with Roast Potatoes, Carrots and Cabbage	Plant Based Burger with Wedges and Peas	Vegetable Fajita with Roasted New Potatoes And Beans
Pick a JACKET POTATO	Cheese or Tuna Mayo	Cheese or Beans	Beans or Tuna Mayo	Cheese or Tuna Mayo	Cheese or Beans
Pick a SANDWICH	Cheese or Ham	Tuna or Ham	Cheese or Tuna	Cheese or Ham	Tuna or Ham
Pick a DESSERT	Iced Sponge	Meringue with Cherry Pie Filling	Chocolate Mousse	Chocolate Krispie Cake	Lemon Drizzle
	Yogurt	Yogurt	Yogurt	Yogurt	Yogurt
	Fresh Fruit	Fresh Fruit	Fresh Fruit	Fresh Fruit	Fresh Fruit

We are pleased to offer a variety of allergen free options on our food menu. Although all food is prepared in a kitchen that handles most allergens and therefore we cannot guarantee that cross contamination will never occur, we do take every possible precaution to prevent this from happening.

Chulmleigh Academy Trust

FRESH FRUIT & YOGHURT SERVED DAILY

AUTUMN MENU *Week 3*

	MONDAY	TUESDAY	WEDNESDAY	THURSDAY	FRIDAY
Pick a MAIN	Pepperoni Pizza with Wedges & Salad	Sweet and Sour Chicken with Rice & Sweetcorn	Roast Chicken with Roast Potatoes, Gravy, Carrots & Cabbage	Chipolata Sausage with Mash, Gravy, Carrots & Peas	Fish Fingers or Salmon Bites with Diced Potatoes & Beans
Pick a MEAT-FREE MAIN	Cheese & Tomato Pizza with Wedges & Salad	Singapore Noodles	Broccoli and Cheddar Quiche with Roast Potatoes, Carrots & Cabbage	Vegetarian Sausage with Mash, Gravy, Carrots & Peas	Halloumi Stuffed Pepper with Diced Potatoes & Beans
Pick a JACKET POTATO	Cheese or Tuna Mayo	Cheese or Beans	Beans or Tuna Mayo	Cheese or Tuna mayo	Cheese or Beans
Pick a SANDWICH	Cheese or Ham	Tuna Mayo or Ham	Cheese or Tuna Mayo	Cheese or Ham	Tuna Mayo or Ham
Pick a DESSERT	Fruit Platter	Waffle with Apple & Toffee Sauce	Jelly and Fruit	Flapjack	Carrot Cake
	Yogurt	Yogurt	Yogurt	Yogurt	Yogurt
	Fresh Fruit	Fresh Fruit	Fresh Fruit	Fresh Fruit	Fresh Fruit

We are pleased to offer a variety of allergen free options on our food menu. Although all food is prepared in a kitchen that handles most allergens and therefore we cannot guarantee that cross contamination will never occur, we do take every possible precaution to prevent this from happening.